

HPT High-pressure pumps

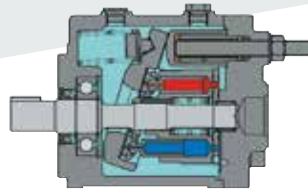
- Suitable for **water recycling** due to low operating speed
- **Automatic flow adjustment** with variable hydraulic pump, no water by-pass needed
- **Long service life** and **low maintenance** due to low operating speed



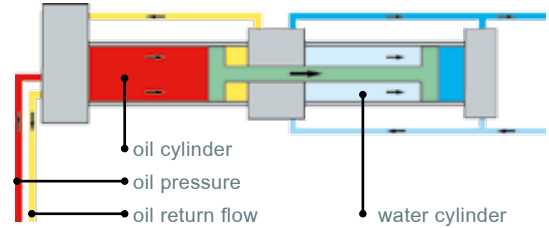
LED lights
For operation monitoring

Temperature sensor
Oil temperature sensor for automatic stop, to secure the hydraulic components

Pump heads
Manufactured from high tensile alloy for reduced weight

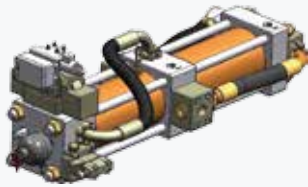


hydraulic variable displacement pump



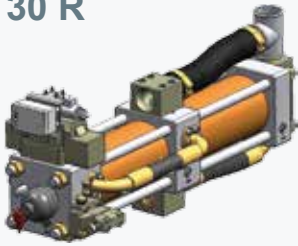
Technical data

HPT 30 C



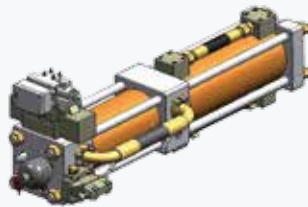
max. volume		max. pressure		max. power	
230 l/min 60 gpm		200 bar 2'900 PSI		87 KW (116 HP)	
weight	length	width	height		
185 kg 408 lb	1'280 mm 50.4 in	483 mm 19.0 in	430 mm 16.9 in		

HPT 30 R



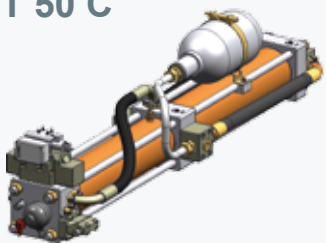
max. volume		max. pressure		max. power	
230 l/min 60 gpm		200 bar 2'900 PSI		87 KW (116 HP)	
weight	length	width	height		
191 kg 421 lb	1'280 mm 50.4 in	376 mm 14.8 in	519 mm 20.4 in		

HPT 35 C



max. volume		max. pressure		max. power	
150 l/min 39 gpm		300 bar 4'351 PSI		87 KW (116 HP)	
weight	length	width	height		
215 kg 473 lb	1'372 mm 54.0 in	376 mm 14.8 in	488 mm 19.2 in		

HPT 50 C



max. volume		max. pressure		max. power	
400 l/min 105 gpm		200 bar 2'900 PSI		150 KW (201 HP)	
weight	length	width	height		
310 kg 683 lb	2'087 mm 82.1 in	492 mm 19.4 in	460 mm 18.1 in		

HPT 70 R



max. volume		max. pressure		max. power	
500 l/min 132 gpm		200 bar 2'900 PSI		190 KW (254 HP)	
weight	length	width	height		
285 kg 628 lb	2'127 mm 83.7 in	372 mm 14.6 in	503 mm 19.8 in		

Technical specifications are approximate values and subject to change without notice.
C = clean water R = recycled water